

Rapid Dissemination and Diversity of CTX-M Extended-Spectrum β -Lactamase Genes in Commensal *Escherichia coli* Isolates from Healthy Children from Low-Resource Settings in Latin America[∇]

Lucia Pallecchi,¹ Alessandro Bartoloni,² Costanza Fiorelli,² Antonia Mantella,² Tiziana Di Maggio,¹ Herlan Gamboa,³ Eduardo Gotuzzo,⁴ Göran Kronvall,⁵ Franco Paradisi,² and Gian Maria Rossolini^{1*}

Dipartimento di Biologia Molecolare, Sezione di Microbiologia, Università di Siena, Siena, Italy¹;
Dipartimento Area Critica Medico Chirurgica, Clinica Malattie Infettive, Università di Firenze,
Florence, Italy²; Distrito de Salud Cordillera, Departamento Santa Cruz, Camiri, Bolivia³;
Instituto de Medicina Tropical Alexander von Humboldt, Universidad Peruana Cayetano Heredia,
Lima, Peru⁴; and Department of Microbiology and Tumor Biology-MTC,
Clinical Microbiology, Karolinska Institutet, Stockholm, Sweden⁵

Received 9 January 2007/Returned for modification 1 March 2007/Accepted 24 May 2007

A survey carried out in 2005 among members of a healthy population of children living in Bolivia and Peru revealed that fecal carriage of *Escherichia coli* strains resistant to expanded-spectrum cephalosporins was remarkably increased compared to that observed in the same settings in 2002 (1.7% in 2005 versus 0.1% in 2002). In this work, we demonstrated that this phenomenon was mainly related to the dissemination of CTX-M-type extended-spectrum β -lactamase (ESBL) determinants among commensal *E. coli* strains. Of 50 ESBL-producing isolates collected in the 2005 survey, 44 harbored a CTX-M-type and 6 an SHV-type (SHV-2 or SHV-12) ESBL. Compared to 2002 results, an increased diversity of CTX-M-type ESBLs was also observed: members of the CTX-M-1 group (CTX-M-15) emerged in Bolivia (where only CTX-M-2 was observed in 2002), while members of the CTX-M-9 group (CTX-M-14 and CTX-M-24) emerged in Peru (where only CTX-M-15 and CTX-M-2 were observed in 2002). A new CTX-M-2 variant named CTX-M-56 was also detected. Molecular characterization of the CTX-M-producing isolates and gene transfer experiments suggested that different mechanisms could be involved in the spreading of different CTX-M group determinants and revealed that additional resistance determinants for non- β -lactam antibiotics were preferentially carried by plasmids encoding certain CTX-M variants (CTX-M-15 and variants of the CTX-M-2 group). Three CTX-M-15-encoding conjugative plasmids from Peruvian isolates carried the new fluoroquinolone resistance gene *aac(6′)-Ib-cr*. To our best knowledge, this is the first report of the detection of *aac(6′)-Ib-cr* in Latin America.

Plasmid-encoded extended-spectrum β -lactamases (ESBLs) impair the efficacy of expanded-spectrum cephalosporins and monobactams and are among the most important acquired resistance determinants emerging worldwide in members of the *Enterobacteriaceae* (7, 15, 21). ESBL-producing strains represent an emerging clinical threat not only for their rapid and widespread dissemination but also because they often exhibit a multidrug resistance phenotype, leaving only limited therapeutic options (7, 15, 21). In fact, a significant impact on morbidity, mortality, and health care-associated costs has been demonstrated previously for infections caused by ESBL producers (30).

The CTX-M-type β -lactamases are members of a lineage of ESBLs which exhibited dramatic dissemination in the past decade; in several clinical settings, these enzymes currently outnumber the classical TEM- and SHV-type ESBLs (5, 9, 21). Based on their amino-acidic sequence diversity, the vast number (more than 50) of CTX-M variants identified thus far have been classified into five major phylogenetic groups: CTX-M-1, CTX-M-2, CTX-M-8, CTX-M-9, and CTX-M-25 ([.lahey.org/studies/webt.stm\) \(5, 9\). Strains producing CTX-M-type ESBLs have been reported as important causes of both nosocomial and community-acquired infections \(5, 9\). CTX-M determinants have been detected not only in clinical isolates but also in commensal bacteria from humans and animals and in isolates from products of the food chain and sewage, revealing a wide distribution and suggesting the presence of environmental reservoirs of these resistance determinants \(8, 9\). In fact, recent studies have addressed the importance of the influx into the hospitals of CTX-M-producing isolates from the community \(3\).](http://www</p></div><div data-bbox=)

ANTRES is a collaborative research project dealing with antibiotic use and resistance in two countries of Latin America, Bolivia, and Peru (<http://www.unifi.it/infdis/antres/default.htm>). Within this project, a large-scale survey of fecal carriage of antibiotic-resistant *Escherichia coli* strains in preschool-age healthy children was carried out in 2002 (1) and was repeated in 2005. Comparative analysis of results from the two surveys revealed that, in this three-year period, a remarkable increase in the rates of resistance to expanded-spectrum cephalosporins had occurred (0.1% in 2002 versus 1.7% in 2005) (1; A. Bartoloni, L. Pallecchi, C. Fiorelli, T. Di Maggio, C. Fernandez, A. L. Villagran, A. Mantella, F. Bartalesi, M. Strohmeyer, A. Bechini, M. Gamboa, M. Rodriguez, C. Kristiansson, G. Kronvall, E. Gotuzzo, F. Paradisi, and G. M. Rossolini, unpublished data). In this report, we demonstrate that this phenomenon was mainly the consequence

* Corresponding author. Mailing address: Dipartimento di Biologia Molecolare, Sezione di Microbiologia, Università di Siena, Policlinico Santa Maria alle Scotte, 53100 Siena, Italy. Phone: 39 0577 233327. Fax: 39 0577 233334. E-mail: rossolini@unisi.it.

[∇] Published ahead of print on 4 June 2007.

TABLE 1. Oligonucleotide primers used for PCR amplification of antibiotic resistance genes

Target gene(s)	Oligonucleotide primer sequence (5'–3') ^a		Reference or source
	Forward	Reverse	
<i>bla</i> _{TEM} -like	ATAAAATTCCTGAAGACGAA	ATATGAGTAAGCTTGGTCTGACAG	19
<i>bla</i> _{SHV} -like	CCTCACTCAAGGATGTATTGTG	TTAGCGTTGCCAGTGYTCG	This study
<i>bla</i> _{CTX-M} -like	ATGTGCAGYACCAGTAARGT	TGGGTRAARTARGTSACCAGA	19
<i>bla</i> _{CTX-M-1} group	ACTATCCGTACAAGGGAGT	CCGTTTCCGCTATTACAAAC	This study
<i>bla</i> _{CTX-M-2} group	GATCCATCACAGAGTCGTCTCT	GGCAGTCATACAGGTAAGTCT	19
<i>bla</i> _{CTX-M-9} group	ACTATCCGTACAAGGGAGT	CAGCCAGAAAAGTTATGGAG	This study
<i>qnrA</i>	ATTTCTCACGCCAGGATTTG	GATCGGCAAAGGTTAGGTCA	25
<i>qnrB</i>	GATCGTCAAAGCCAGAAAGG	ACGATGCCTGGTAGTTGTCC	25
<i>qnrS</i>	ACGACATTCGTCAACTGCAA	TAAATTGGCACCCCTGTAGGC	25
<i>aac(6)-Ib</i>	TTGGGATGCTCTA TGAGTGGCTA	CTCGAATGCCTGGCGTGT	20

^a Forward primers used for amplification of group 2 or groups 1 and 9 CTX-M genes targeted the *ISCR1* or *ISEcp1* element, respectively.

of the dissemination of CTX-M-type determinants among commensal *E. coli* strains.

(These results were presented in part at the 46th Inter-science Conference on Antimicrobial Agents and Chemotherapy, San Francisco, CA, 2006.)

MATERIALS AND METHODS

Bacterial isolates. The 54 *E. coli* isolates investigated in this study represented all the isolates showing reduced susceptibility to ceftriaxone (defined according to the Clinical and Laboratory Standards Institute [CLSI] modified breakpoint for screening of ESBL producers [12]) collected in the 2005 survey of the ANTRES project. The ANTRES project included two large surveys carried out in 2002 and 2005, respectively, of antibiotic resistance rates in commensal *E. coli* strains from healthy children (aged 6 to 72 months) living in four urban areas of Latin America (Camiri, Santa Cruz Department, and Villa Montes, Tarija Department, Bolivia, and Yurimaguas, Loreto Department, and Moyobamba, San Martin Department, Peru). The two surveys were conducted using the same study design and methodology and covered population samples of similar sizes (3,174 and 3,193 healthy children in the 2002 and 2005 surveys, respectively) (1; Bartoloni et al., unpublished data). The four CTX-M-producing *E. coli* isolates from the 2002 survey, which had been previously investigated (19), were included for comparative analysis.

In vitro susceptibility testing. Antimicrobial susceptibility was determined by the disk diffusion test, according to the methods and interpretative criteria proposed by CLSI (12). Antibiotic disks were from Oxoid (Oxoid, Milan, Italy). *E. coli* ATCC 25922 was used for quality control purposes. The double-disk synergy test for confirmation of ESBL activity was carried out as described previously (16) by screening isolates for synergism between clavulanate (represented by a disk with amoxicillin-clavulanate) and cefotaxime, ceftazidime, and aztreonam.

Molecular analysis techniques. Basic procedures for DNA extraction and analysis were performed as described by Sambrook and Russell (29). Nucleotide sequences were determined on both strands of PCR amplification products at the MacroGen sequencing facility (MacroGen Inc., Seoul, Korea). Analysis and comparisons of nucleotide sequence were carried out using programs available at the NCBI web interface (<http://www.ncbi.nlm.nih.gov>). The presence of CTX-M-related sequences was investigated by colony blot hybridization with a *bla*_{CTX-M} probe, as described previously (19). Primers used in this work for PCR amplification of antibiotic resistance genes are reported in Table 1. PCR conditions were as described in the corresponding references or, for PCR amplification of *bla*_{CTX-M} alleles belonging to groups 1 and 9 and of *bla*_{SHV} genes, as follows: initial denaturation at 94°C for 5 min; denaturation at 94°C for 45 s, annealing at 50°C for 45 s, and elongation at 72°C for 5 min, repeated for 35 cycles; and final extension at 72°C for 10 min. Forward primers used for amplification of group 2 or for amplification of group 1 and 9 CTX-M genes targeted *ISCR1* and *ISEcp1* elements, respectively. Phylogenetic grouping of the *E. coli* isolates was determined by the multiplex PCR-based method developed by Clermont et al., which allows identification of the four major phylogenetic groups (A, B1, B2, and D) (11). Randomly amplified polymorphic DNA (RAPD) genotyping was performed as previously described (17) using, separately, the decamer primers 1290 and 1254. RAPD patterns were considered to be different when the profiles differed by at least one band. Analysis of the RAPD patterns was performed with

Diversity Database fingerprinting software, version 2 (Bio-Rad Laboratories, Hercules, CA).

Plasmid analysis. Plasmid replicon typing was carried out by PCR as described by Carattoli et al. (10). Conjugal transfer of CTX-M determinants was assayed by mating experiments using Mueller-Hinton (MH) agar plates (Difco Laboratories, Detroit, MI) and *E. coli* J53 (*pro met* rifampin resistant and nalidixic acid resistant [NAL^r]) as the recipient and an initial donor/recipient ratio of 0.1. Mating plates were incubated at 30°C for 14 h. Transconjugants were selected on MH agar containing rifampin (400 µg/ml) and nalidixic acid (32 µg/ml) plus cefotaxime (2 µg/ml) (Sigma Chemical Co., St. Louis, MO). Transconjugants were always confirmed by testing for the recipient's genetic markers (*pro met*). Under the above-described conditions, the detection sensitivity of the mating assay was $\geq 5 \times 10^{-8}$ transconjugants/recipient. Mobilization of nonconjugative *bla*_{CTX-M}-harboring plasmids was carried out by electroporation using *E. coli* DH5 α and MH agar containing cefotaxime (2 µg/ml) for selection of transformants. The presence of *bla*_{CTX-M} genes in the transconjugants and transformants was always confirmed by PCR. Plasmid fingerprinting analysis after digestion with PstI was carried out with all transferable A/C-, I1-, and F-type plasmids carrying group 2, 9, and 1 CTX-M determinants, respectively.

Nucleotide sequence accession numbers. The sequences of *bla*_{CTX-M-56} and the new variant allele of *bla*_{CTX-M-24} have been deposited in GenBank and assigned accession numbers EF374097 and EF374096, respectively.

RESULTS

Spread of ESBL-producing *E. coli* in the commensal microbiota of healthy children from Bolivia and Peru. In the 2005 survey, the prevalence of children carrying isolates with reduced susceptibility to ceftriaxone was found to be remarkably increased compared to that observed three years earlier (1.7% versus 0.1%). The phenomenon was evident in each of the four surveyed areas, two in Bolivia (Camiri, 2.9% versus 0.1%; Villa Montes, 0.9% versus 0.1%) and two in Peru (Yurimaguas, 1.5% versus 0.1%; Moyobamba, 1.5% versus 0.1%) (1; Bartoloni et al., unpublished data).

Overall, 54 isolates showing reduced ceftriaxone susceptibility were collected in the 2005 survey, and 50 of them were confirmed as ESBL producers in a double-disk synergy test. The four isolates that did not exhibit ESBL production showed a resistance phenotype suggestive of production of an AmpC-type β -lactamase (resistance to cephamycins and to β -lactam-inhibitor combinations, susceptibility to cefepime) and were not further investigated in this work.

The 50 ESBL-producing isolates were tested for the presence of CTX-M-like determinants by colony-blot hybridization. Results showed that 44 isolates (88%) carried *bla*_{CTX-M}-related sequences. Most (84%) of the CTX-M-producing

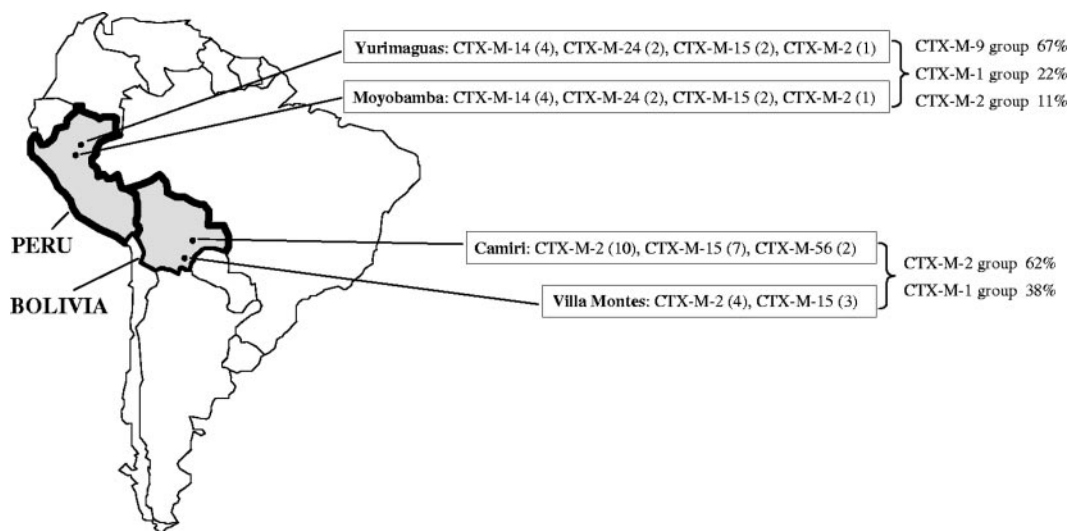


FIG. 1. Geographic distribution of CTX-M variants detected in fecal *E. coli* strains from healthy children in the 2005 survey of the ANTRES study. The number of isolates harboring each CTX-M variant is reported in brackets.

isolates also carried a *bla*_{TEM-1b} gene, while none of them carried *bla*_{SHV}-related sequences. Prevalences of fecal carriers of CTX-M-positive *E. coli* strains were 2.4% in Camiri and 0.9% in Villa Montes, Bolivia, and 1.1% in Yurimaguas and 1.1% in Moyobamba, Peru. The six ESBL-producing *bla*_{CTX-M}-negative isolates were shown to harbor SHV-type ESBL determinants, either *bla*_{SHV-2} (four isolates, two from Bolivia and two from Peru) or *bla*_{SHV-12} (two isolates from Peru). Two of these isolates (one SHV-2-producing isolate and one SHV-12-producing isolate, both from Peru) also carried a *bla*_{TEM-1b} gene.

Characterization and distribution of the CTX-M determinants. Sequencing of the CTX-M-encoding genes identified variants belonging to CTX-M-2 (41%), CTX-M-1 (32%), and CTX-M-9 (27%) groups. CTX-M-2 group determinants included *bla*_{CTX-M-2} and a new variant named *bla*_{CTX-M-56} (GenBank accession number EF374097) that differed from *bla*_{CTX-M-2} (2) by a single nucleotide mutation (G824A), resulting in a replacement of serine by asparagine at position 275. CTX-M-1 group determinants included only *bla*_{CTX-M-15}. CTX-M-9 group determinants included *bla*_{CTX-M-14} and a new allele of *bla*_{CTX-M-24} (GenBank accession number EF374096), showing two synonymous transversions (C823A and C825A) compared to *bla*_{CTX-M-24} as described by Eckert et al. (13). This new *bla*_{CTX-M-24} allele differed from *bla*_{CTX-M-14} (18) by a single transversion (C825A) that was responsible for the replacement of a serine by an arginine at position 275 and was likely derived from *bla*_{CTX-M-14}. As far as the 5'-flanking regions of CTX-M genes are concerned, all group 2 alleles were found to be associated with an *ISCR1* element, while all group 1 and 9 alleles were found to be associated with an *ISEcp1* element.

Concerning the geographic distribution, group 2 CTX-M determinants were the most prevalent in Bolivia (62%) and the least prevalent in Peru (11%), group 9 CTX-M determinants were the most prevalent in Peru (67%) and absent in Bolivia, while group 1 CTX-M determinants were the second most prevalent in both countries (38% in Bolivia and 22% in Peru). In Bolivia, the most prevalent CTX-M variant was *bla*_{CTX-M-2}

(54%) followed by *bla*_{CTX-M-15} (38%) and *bla*_{CTX-M-56} (8%). In Peru, the most prevalent CTX-M variant was *bla*_{CTX-M-14} (45%) followed by *bla*_{CTX-M-24} (22%), *bla*_{CTX-M-15} (22%), and *bla*_{CTX-M-2} (11%) (Fig. 1).

Antimicrobial susceptibility of isolates harboring *bla*_{CTX-M} genes. All the CTX-M-producing isolates showed a multidrug resistance phenotype: 86% showed coresistance to tetracycline, 77% to trimethoprim-sulfamethoxazole, 68% to gentamicin, 57% to nalidixic acid, and 54% to ciprofloxacin (Table 2). Higher coresistance rates were observed in CTX-M-15-producing isolates for quinolones (93%; resistance to both nalidixic acid and ciprofloxacin) and in CTX-M-2 group-producing isolates for gentamicin (100%) (Table 2).

Phylogenetic grouping and genotypes of the CTX-M-producing *E. coli* isolates. CTX-M-producing isolates belonged to all phylogenetic groups (A, 55%; B1, 25%; D, 16%; and B2, 4%) (Table 2). No significant correlation was observed between the nature of the CTX-M determinant and the phylogenetic group.

RAPD genotyping identified 31 different types, of which 25 were unique and 6 included more than one isolate (Table 2). All the isolates harboring CTX-M-2 group determinants (*bla*_{CTX-M-2} and *bla*_{CTX-M-56}) showed unique RAPD genotypes, while clonal expansion was observed for some isolates harboring CTX-M determinants of the other groups (Table 2). In particular, dissemination of CTX-M-15 in Bolivia (not observed in 2002) appeared to be the consequence of the spread of two clones (RAPD types 30 and 31) circulating in both Camiri and Villa Montes (Table 2). Clonal expansion of CTX-M-producing isolates was also observed in Peru for CTX-M-14-, CTX-M-15-, and CTX-M-24-producing isolates (RAPD types 20, 29, and 25 through 26, respectively), even though the spreading of each clone was limited to a single city (Table 2). None of the CTX-M-producing isolates collected in 2005 showed genomic similarity (based on RAPD analysis) to those collected from the same areas in the 2002 survey (data not shown).

Transferability of CTX-M determinants and typing of the *bla*_{CTX-M}-harboring plasmids. Conjugal transfer of CTX-M

TABLE 2. Characteristics of the CTX-M-producing isolates and of the *bla*_{CTX-M}-harboring plasmids

Group	CTX-M type	RAPD type (no. of isolates)	Phylogenetic group	Origin ^a	TEM type ^b	Resistance to antibiotics other than β -lactams ^c	Transfer in <i>E. coli</i> ^d	Resistance traits cotransferred with <i>bla</i> _{CTX-M} genes ^e	Plasmid replicon type(s) in recipients	Plasmid fingerprinting in recipients ^f		
CTX-M-2	CTX-M-2	1 (1)	B1	Y	TEM-1b*	GEN, SXT, NAL, CIP	Conj.	GEN	A/C	A		
		2 (1)	D	M	TEM-1b*	GEN, TET, SXT, NAL, CIP	Conj.	TET	A/C	B		
		3 (1)	A	C	TEM-1b*	GEN, TET, SXT	Conj.	GEN, SXT	Not identified	ND		
		4 (1)	A	C	TEM-1b*	GEN, TET	Conj.	GEN, TET	A/C	C		
		5 (1)	A	C	TEM-1b*	GEN, TET, SXT	Conj.	GEN	A/C	A		
		6 (1)	A	C	TEM-1b	GEN, TET, SXT	Conj.	GEN, TET, SXT	Not identified	ND		
		7 (1)	B1	C	TEM-1b*	GEN, TET, SXT	Conj.	GEN, TET, SXT	FVII	ND		
		8 (1)	B1	C	TEM-1b*	GEN, TET, NAL, CIP	Conj.	GEN	A/C	A		
		9 (1)	B1	C	TEM-1b*	GEN, TET, SXT, NAL, CIP	Conj.	GEN	A/C	D		
		10 (1)	D	C	TEM-1b*	GEN, TET, SXT	Conj.	GEN, TET, SXT	A/C	E		
CTX-M-9	CTX-M-14	11 (1)	D	C	TEM-1b*	GEN, TET, SXT	Conj.	GEN, TET, SXT	Not identified	ND		
		12 (1)	D	C	TEM-1b*	GEN, TET, SXT	Conj.	GEN, TET, SXT	A/C	F		
		13 (1)	D	C	TEM-1b*	GEN, TET, SXT	Conj.	GEN, TET	A/C	ND		
		14 (1)	A	VM	TEM-1b*	GEN, TET	Conj.	GEN	II	ND		
		15 (1)	B2	VM	TEM-1b*	GEN, TET, SXT, NAL	Conj.	GEN	A/C	G		
		16 (1)	D	VM	TEM-1b*	GEN, TET, SXT	Conj.	GEN, TET, SXT	A/C	A		
		17 (1)	A	C	TEM-1b*	GEN, TET, SXT	Conj.	GEN	A/C	H		
		18 (1)	A	C	TEM-1b*	GEN, TET, SXT	Conj.	GEN	A/C	G		
		CTX-M-24	CTX-M-24	19 (1)	A	Y	TEM-1b	TET, SXT, NAL, CIP	No	None	II	I
				20 (3)	A	Y	TEM-1b	TET, SXT	Conj.	None	II	L
21 (1)	A			M	TEM-1b	SXT, NAL, CIP	Transf.	None	II	L		
22 (1)	A			M	TEM-1b	GEN, TET, SXT, NAL, CIP	No	None	II	L		
23 (1)	A			M	TEM-1b	GEN, TET, SXT, NAL, CIP	Transf.	None	II	M		
24 (1)	D			M	TEM-1b	SXT, NAL, CIP	Conj.	None	II	N		
25 (2)	B1			Y	TEM-1b*	SXT, NAL, CIP	Conj.	None	II	O		
26 (2)	A			M	TEM-1b*	TET, SXT	Conj.	None	II	O		
CTX-M-1	CTX-M-15			27 (1)	B2	Y	TEM-1b	GEN	No	TET, CIP	FIA, FIB, FII	P
				28 (1)	D	Y	TEM-1b*	GEN, TET, NAL, CIP	Conj.	GEN, SXT, CIP	FIA, FIB, FII	Q
		29 (2)	A	M	TEM-1b	GEN, TET, SXT, NAL, CIP	Conj.	GEN, SXT, CIP	FIA, FIB, FII	Q		
		30 (3 + 2)	A	C + VM	TEM-1b	GEN, TET, SXT, NAL, CIP	No	None	Not identified	ND		
		31 (4 + 1)	B1	C + VM	TEM-1b	TET, NAL, CIP	Conj.	None	Not identified	ND		

^a C, Camiri, Bolivia; VM, Villa Montes, Bolivia; Y, Yurimaguas, Peru; M, Moyobamba, Peru.

^b *bla*_{TEM} determinants cotransferred by conjugation with *bla*_{CTX-M} genes are indicated by an asterisk.

^c GEN, gentamicin; TET, tetracycline; SXT, trimethoprim-sulfamethoxazole; CIP, ciprofloxacin.

^d Conj., transfer by conjugation in *E. coli* J53; Transf., transfer by electroporation in *E. coli* DH5 α .

^e A resistance trait was considered to have been cotransferred with the *bla*_{CTX-M} gene when the transconjugants or transformants showed a decrease of ≥ 3 mm in the inhibition diameter observed for the recipient strain.

^f Susceptibility to NAL was not tested with the transconjugants because of the 'NAL' genotype of the J53 recipient strain.

ND, not determined. Plasmid profiles were considered to be different when at least one differing band was observed.

determinants was observed with 33 isolates (75%) representative of 24 different RAPD types (Table 2). All the CTX-M-2 group determinants were carried by conjugative plasmids, mainly of the A/C type (72%), which always carried other resistance genes (cotransfer of gentamicin resistance occurred in 94% of cases) (Table 2). Plasmid replicon typing of transconjugants obtained with the three CTX-M-2-producing isolates from the 2002 survey (19) identified in all cases plasmids of the A/C type, underlining the role of these mobile genetic elements in the dissemination of CTX-M-2 group determinants in the study areas. Conjugal transfer of CTX-M-1 and CTX-M-9 group determinants was observed less frequently (57% and 58%, respectively), and in some cases non-conjugative CTX-M-9 group determinants could be mobilized by electroporation (Table 2). Transfer of CTX-M-9 group determinants was related to I1-type plasmids and was never associated with cotransfer of other resistance traits. Transfer of CTX-M-1 group determinants was related to conjugative plasmids harboring none of the replicon types investigated (RAPD type 31 from Bolivia) or to F-type conjugative plasmids which also carried determinants responsible for fluoroquinolone resistance (RAPD types 28 and 29 from Peru) (Table 2).

Plasmid fingerprinting analysis was carried out with all transferable A/C-, I1-, and F-type plasmids carrying group 2, 9, and 1 CTX-M determinants, respectively. Different plasmid profiles were observed within plasmids carrying each replicon type (Table 2). However, in most cases, plasmids carrying CTX-M genes of the same group shared some bands of the same size, suggesting a common ancestry (data not shown). In particular, the plasmids carrying *bla*_{CTX-M-56} showed a profile identical to that of one of the plasmids carrying *bla*_{CTX-M-2}, further supporting the hypothesis of a local evolution of the new CTX-M variant (Table 2 and data not shown). Moreover, the same profile (profile A) was observed with *bla*_{CTX-M-2}-harboring plasmids from both Peru and Bolivia and was apparently identical to that observed with the A/C-type *bla*_{CTX-M-2}-harboring plasmid detected in Peru during the 2002 survey (19), demonstrating the presence of an epidemic plasmid responsible for the dissemination of CTX-M-2 ESBL in these geographic areas (Table 2 and data not shown).

Characterization of the plasmid-mediated fluoroquinolone resistance determinants. The three transconjugants showing decreased susceptibility to ciprofloxacin were investigated for the presence of known plasmid-mediated fluoroquinolone resistance genes (24). None of the *qnr*-type determinants investigated (*qnrA*, *qnrB*, and *qnrS*) was detected. In contrast, all three transconjugants gave positive results in a PCR experiment using primers designed for amplification of *aac*(6')-Ib variants (20). Sequence analysis of the amplicons identified, in all cases, an *aac*(6')-Ib-cr variant (100% identity with *aac*(6')-Ib-cr of GenBank entry DQ303918) (26) that could account for the decreased susceptibility to ciprofloxacin expressed by the transconjugants. To our best knowledge, this is the first detection of *aac*(6')-Ib-cr in Latin America.

The F-type plasmids harboring *bla*_{CTX-M-15} and *aac*(6')-Ib-cr showed identical patterns of F replicons (FIA, FIB, and FII) and similar plasmid profiles (Table 2 and data not shown). Sequence analysis of the FII-regulatory antisense RNA CopA, which is involved in the control of replication and in the incompatibility behavior of the FII plasmids (4), evidenced, in all

cases, identical CopA sequences (100% identical to that of plasmid pRSB107 of GenBank entry AJ851089), further supporting the idea of a common origin of these three plasmids.

DISCUSSION

Results of this study provided an example of how ESBL determinants in general and CTX-M in particular are rapidly spreading among commensal *E. coli* strains in healthy subjects from low-resource settings. In the surveyed area, including urban settings in Bolivia and Peru, the prevalence of healthy children carrying ESBL-positive *E. coli* strains in their commensal microbiota underwent a dramatic (17-fold) increase over a 3-year time period that was mostly contributed by CTX-M-type determinants. This phenomenon is a matter of concern, since commensals can act as a reservoir of resistance genes (Reservoirs of Antibiotic Resistance Network [<http://www.roarproject.org>]; Alliance for Prudent Use of Antibiotics), while intestinal colonization by ESBL-producing isolates can be a source for influx of ESBL determinants into the hospital setting and represents a risk factor for subsequent infections caused by ESBL-producing strains in hospitalized patients (3). The reasons for this alarming evolution remain unclear. Although antibiotic consumption data are not available, it is reasonable to assume that carriage of commensal ESBL producers in preschool-age healthy children mostly reflected exposure to contamination in the family environment rather than an increased direct exposure to expanded-spectrum cephalosporins or other agents known to select ESBL producers (15, 21, 27, 28). To further clarify this point, it would be interesting to assess the extent of the phenomenon in the adult population from the same areas also.

Interestingly, the increased prevalence of ESBL-producing isolates was also associated with an increased diversity of circulating ESBL determinants, although the use of ceftriaxone as the only ESBL screening agent might have limited the detection of ESBLs with specific ceftazidimase activity. Compared to the baseline survey carried out in 2002 (19), members of the CTX-M-1 group (CTX-M-15) emerged in Bolivia also, while members of the CTX-M-9 group (CTX-M-14 and CTX-M-24) emerged in Peru. Moreover, SHV-type ESBLs emerged in both countries.

Molecular characterization of the CTX-M-producing isolates suggested different mechanisms of spreading for determinants belonging to different CTX-M groups. Concerning CTX-M-2 group determinants, which are widely disseminated in Latin America (5, 9, 22, 23) and have been present in the study areas since 2002 (19), their exclusive location on conjugative plasmids and the high genotypic diversity of bacterial hosts suggest that plasmid dissemination played a major role in their diffusion. This hypothesis is further supported by plasmid replicon typing and fingerprinting analysis results, which revealed that one or a few related A/C-type conjugative plasmids could be involved in their dissemination in these areas. In contrast, a role in clonal expansion, along with plasmid mobilization, was evidenced for dissemination of CTX-M determinants more recently introduced in the study areas (the CTX-M-1 group in Bolivia and the CTX-M-9 group in Peru).

Two new CTX-M alleles were identified in this study: a new CTX-M-2 group variant named *bla*_{CTX-M-56} (in Bolivia) and a

new *bla*_{CTX-M-24} allele (in Peru). Interestingly, the two differed by a single nucleotide mutation from the most prevalent CTX-M-type gene detected in each country (CTX-M-2 in Bolivia and CTX-M-14 in Peru), suggesting a local evolution of these resistance determinants. This hypothesis was further supported by results of replicon typing and plasmid fingerprinting, which showed a common genetic context for these new *bla*_{CTX-M} alleles and their likely precursors (A/C type plasmids for *bla*_{CTX-M-2} and *bla*_{CTX-M-56}; II-type plasmids for *bla*_{CTX-M-14} and *bla*_{CTX-M-24}).

CTX-M-encoding plasmids are known to often carry additional determinants of resistance to non-β-lactam agents, including quinolones (9). In this study, we detected the presence of plasmid-mediated quinolone resistance determinants in three *bla*_{CTX-M-15}-harboring conjugative plasmids from Peruvian isolates. These plasmids carried the *aac*(6′)-*Ib-cr* gene and showed identical patterns of replicon types (FIA, FIB, and FII) and similar plasmid profiles, suggesting a common origin. Moreover, sequence analysis of the FII replicons evidenced an IncFII plasmid backbone identical to that of pRSB107, which was recently also found in *bla*_{CTX-M-15}-harboring plasmids from *E. coli* clinical isolates in the United Kingdom (14). These findings support the evidence of the dissemination of FII-type *bla*_{CTX-M-15}-harboring plasmids in different countries, a result that has recently also been observed for a different lineage of IncFII plasmids detected in CTX-M-15-producing *E. coli* strains from Canada and United Kingdom (6, 14). Furthermore, to our best knowledge this is the first detection of an *aac*(6′)-*Ib-cr* gene in commensal bacteria from healthy humans and also the first report of the presence of this resistance determinant in Latin America.

ACKNOWLEDGMENTS

This work was supported by the European Commission within the ANTRES project (Towards Controlling Antimicrobial Use and Resistance in Low-Income Countries: an intervention study in Latin America), INCO-DEV contract ICA4-CT-2001-10014.

We are grateful to Patrice Nordmann and Laurent Poirel (Université Paris-Sud, K.-Bicetre, France) for supplying controls for *qnr* genes. We wish to thank all the members of the ANTRES Study Group for their support in this study.

REFERENCES

- Bartoloni, A., L. Pallecchi, M. Benedetti, C. Fernandez, Y. Vallejos, E. Guzman, A. L. Villagran, A. Mantella, C. Lucchetti, F. Bartalesi, M. Strohmeier, A. Bechini, H. Gamboa, H. Rodriguez, T. Falkenberg, G. Kronvall, E. Gotuzzo, F. Paradisi, and G. M. Rossolini. 2006. Multidrug-resistant commensal *Escherichia coli* in children, Peru and Bolivia. *Emerg. Infect. Dis.* 12:907–913.
- Bauernfeind, A., I. Stemplinger, R. Jungwirth, S. Ernst, and J. M. Casellas. 1996. Sequences of β-lactamase genes encoding CTX-M-1 (MEN-1) and CTX-M-2 and relationship of their amino acid sequences with those of other β-lactamases. *Antimicrob. Agents Chemother.* 40:509–513.
- Ben-Ami, R., M. J. Schwaber, S. Navon-Venezia, D. Schwartz, M. Giladi, I. Chmelnitsky, A. Leavitt, and Y. Carmeli. 2006. Influx of extended-spectrum β-lactamase-producing *Enterobacteriaceae* into the hospital. *Clin. Infect. Dis.* 42:925–934.
- Blomberg, P., K. Nordstrom, and E. G. Wagner. 1992. Replication control of plasmid R1: RepA synthesis is regulated by CopA RNA through inhibition of leader peptide translation. *EMBO J.* 11:2675–2683.
- Bonnet, R. 2004. Growing group of extended-spectrum β-lactamases: the CTX-M enzymes. *Antimicrob. Agents Chemother.* 48:1–14.
- Boyd, D. A., S. Tyler, S. Christianson, A. McGeer, M. P. Muller, B. M. Willey, E. Bryce, M. Gardam, P. Nordmann, and M. R. Mulvey. 2004. Complete nucleotide sequence of a 92-kilobase plasmid harbouring the CTX-M-15 extended-spectrum β-lactamase involved in an outbreak in long-term-care facilities in Toronto, Canada. *Antimicrob. Agents Chemother.* 48:3758–3764.
- Bradford, P. A. 2001. Extended-spectrum β-lactamases in the 21st century: characterization, epidemiology, and detection of this important resistance threat. *Clin. Microbiol. Rev.* 14:933–951.
- Brinas, L., M. A. Moreno, M. Zarazaga, C. Porrero, Y. Saenz, M. Garcia, L. Dominguez, and C. Torres. 2003. Detection of CMY-2, CTX-M-14, and SHV-12 β-lactamases in *Escherichia coli* fecal-sample isolates from healthy chickens. *Antimicrob. Agents Chemother.* 47:2056–2058.
- Canton, R., and T. M. Coque. 2006. The CTX-M β-lactamase pandemic. *Curr. Opin. Microbiol.* 9:466–475.
- Carattoli, A., A. Bertini, L. Villa, V. Falbo, K. L. Hopkins, and E. J. Threlfall. 2005. Identification of plasmids by PCR-based replicon typing. *J. Microbiol. Methods* 63:219–228.
- Clermont, O., S. Bonacorsi, and E. Bingen. 2000. Rapid and simple determination of the *Escherichia coli* phylogenetic group. *Appl. Environ. Microbiol.* 66:4555–4558.
- Clinical and Laboratory Standards Institute. 2006. Performance standards for antimicrobial disk susceptibility tests; approved standard—ninth edition. Clinical Laboratory Standards Institute, Wayne, PA.
- Eckert, C., V. Gautier, and G. Arlet. 2006. DNA sequence analysis of the genetic environment of various *bla*_{CTX-M} genes. *J. Antimicrob. Chemother.* 57:14–23.
- Hopkins, K. L., E. Liebana, L. Villa, M. Batchelor, E. J. Threlfall, and A. Carattoli. 2006. Replicon typing of plasmids carrying CTX-M or CMY β-lactamases circulating among *Salmonella* and *Escherichia coli* isolates. *Antimicrob. Agents Chemother.* 50:3203–3206.
- Jacoby, G. A., and L. S. Munoz-Price. 2005. The new β-lactamases. *N. Engl. J. Med.* 352:380–391.
- Luzzaro, F., M. Mezzatesta, C. Mugnaioli, M. Perilli, S. Stefani, G. Amicosante, G. M. Rossolini, and A. Toniolo. 2006. Trends in production of extended-spectrum β-lactamases among enterobacteria of medical interest: report of the second Italian nationwide survey. *J. Clin. Microbiol.* 44:1659–1664.
- Pacheco, A. B., B. E. Guth, K. C. Soares, L. Nishimura, D. F. de Almeida, and L. C. Ferreira. 1997. Random amplification of polymorphic DNA reveals serotype-specific clonal clusters among enterotoxigenic *Escherichia coli* strains isolated from humans. *J. Clin. Microbiol.* 35:1521–1525.
- Pai, H., E. H. Choi, H. J. Lee, J. Y. Hong, and G. A. Jacoby. 2001. Identification of CTX-M-14 extended-spectrum β-lactamase in clinical isolates of *Shigella sonnei*, *Escherichia coli*, and *Klebsiella pneumoniae* in Korea. *J. Clin. Microbiol.* 39:3747–3749.
- Pallecchi, L., M. Malossi, A. Mantella, E. Gotuzzo, C. Trigo, A. Bartoloni, F. Paradisi, G. Kronvall, and G. M. Rossolini. 2004. Detection of CTX-M-type β-lactamase genes in fecal *Escherichia coli* isolates from healthy children in Bolivia and Peru. *Antimicrob. Agents Chemother.* 48:4556–4561.
- Park, C. H., A. Robicsek, G. A. Jacoby, D. Sahn, and D. C. Hooper. 2006. Prevalence in the United States of *aac*(6′)-*Ib-cr* encoding a ciprofloxacin-modifying enzyme. *Antimicrob. Agents Chemother.* 50:3953–3955.
- Paterson, D. L., and R. A. Bonomo. 2005. Extended-spectrum β-lactamases: a clinical update. *Clin. Microbiol. Rev.* 18:657–686.
- Quinteros, M., M. Radice, N. Gardella, M. M. Rodriguez, N. Costa, D. Korbenfeld, E. Couto, G. Gutkind, and the Microbiology Study Group. 2003. Extended-spectrum β-lactamases in *Enterobacteriaceae* in Buenos Aires, Argentina, public hospitals. *Antimicrob. Agents Chemother.* 47:2864–2867.
- Radice, M., P. Power, J. Di Conza, and G. Gutkind. 2002. Early dissemination of CTX-M-derived enzymes in South America. *Antimicrob. Agents Chemother.* 46:602–604.
- Robicsek, A., G. A. Jacoby, and D. C. Hooper. 2006. The worldwide emergence of plasmid-mediated quinolone resistance. *Lancet Infect. Dis.* 6:629–640.
- Robicsek, A., J. Strahilevitz, D. F. Sahn, G. A. Jacoby, and D. C. Hooper. 2006. *qnr* prevalence in ceftazidime-resistant *Enterobacteriaceae* isolates from the United States. *Antimicrob. Agents Chemother.* 50:2872–2874.
- Robicsek, A., J. Strahilevitz, G. A. Jacoby, M. Macielag, D. Abbanat, C. H. Park, K. Bush, and D. C. Hooper. 2006. Fluoroquinolone-modifying enzyme: a new adaptation of a common aminoglycoside acetyltransferase. *Nat. Med.* 12:83–88.
- Rodriguez-Bano, J., M. D. Navarro, L. Romero, M. A. Muniain, M. de Cueto, M. J. Rios, J. R. Hernandez, and A. Pascual. 2006. Bacteremia due to extended-spectrum β-lactamase-producing *Escherichia coli* in the CTX-M era: a new clinical challenge. *Clin. Infect. Dis.* 43:1407–1414.
- Rodriguez-Bano, J., M. D. Navarro, L. Romero, M. A. Muniain, E. J. Perea, R. Perez-Cano, J. R. Hernandez, and A. Pascual. 2006. Clinical and molecular epidemiology of extended-spectrum β-lactamase-producing *Escherichia coli* as a cause of nosocomial infection or colonization: implications for control. *Clin. Infect. Dis.* 42:37–45.
- Sambrook, J., and D. W. Russell. 2001. Molecular cloning: a laboratory manual, 3rd ed. Cold Spring Harbor Laboratory Press, Cold Spring Harbor, NY.
- Schwaber, M. J., S. Navon-Venezia, K. S. Kaye, R. Ben-Ami, D. Schwartz, and Y. Carmeli. 2006. Clinical and economic impact of bacteremia with extended-spectrum-β-lactamase-producing *Enterobacteriaceae*. *Antimicrob. Agents Chemother.* 50:1257–1262.